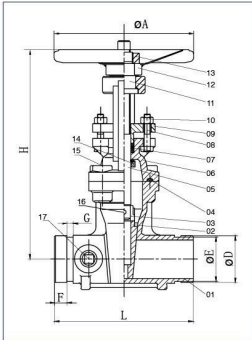


**200PSI-OS&Y Type Grooved End Gate Valve Model No.:Z81**



**Technical Specifications:**

1. Design Standard: AWWA C515
2. Nominal Pressure: 200PSI
3. Groove Standard: Metric or AWWA C906
4. Both inside and outside of the body need Epoxy Resin Coating



**SIZE CHART**

SIZE ITEM	2"	2-1/2"	3"	4"	5"	6"	8"	10"	12"
L	178	190	203	229	254	267	292	330	356
H	280	310	370	428	532	590	735	908	1150
øA	180	220	250	280	300	350	380	450	450
øD	60.3	76.1	88.9	114.3	141.3	168.3	219.1	273	323.9
øE	57.2	72.3	84.9	110.1	137	163.9	214.4	268.3	318.3
F	15.9	15.9	15.9	15.9	15.9	15.9	19	19	19
G	7.9	7.9	7.9	9.5	9.5	9.5	11.1	12.7	12.7

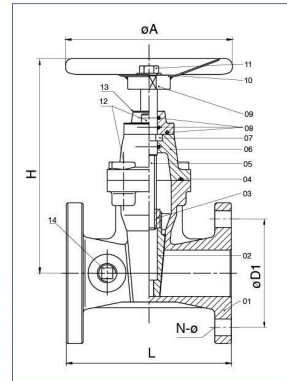
NO.	Name	Qty.	Material	Remark
17	Plug	2	Cast Bronze	ASTM B62
16	Cylinder Pin	1	Steel	
15	Countersunk Head Bolt	4	Steel	
14	Flat Key	1	S.S.416	ASTM A276
13	Lock Nut	1	Steel	ANSI 1045
12	Handwheel	1	Steel	ANSI 1045
11	Rotating Nut	1	C95400	ASTM B148
10	Nut	2	Steel	
09	Platen	1	DI	ASTM A536 65-45-12
08	Bolt	2	Steel	ASTM A307 B
07	Sealing Kits	3	PTFE	ASTM D4745
06	Cap	1	DI	ASTM A536 65-45-12
05	Stem	1	S.S.304	ASTM A276
04	Sealing Pad	1	EPDM	ASTM D2000 EPDM
03	Connecting Part	1	C95400	ASTM B148
02	Disc	1	DI-EPDM	ASTM A536 65-45-12 - EPDM
01	Body	1	DI	ASTM A536 65-45-12

**200PSI-NRS Type Flanged End Gate Valve Model No.:Z45B**



**Technical Specifications:**

1. Design Standard: AWWA C515
2. Nominal Pressure: 200PSI
3. Flange Standard: ANSI B16.1 Class125 or according to the customer's requirements
4. Both inside and outside of the body need Epoxy Resin Coating



**SIZE CHART**

SIZE ITEM	2-1/2"	3"	4"	5"	6"	8"	10"	12"
L	190	203	229	254	267	292	330	356
H	255	289	323	386	420	520	628	725
øD1	139.5	152.5	190.5	216	241.5	298.5	362	432
N-ø	4-19	4-19	8-19	8-22	8-22	8-22	12-25	12-25
øA	220	250	280	300	350	380	450	450

NO.	Name	Qty.	Material	Remark
14	Plug	2	Cast Bronze	ASTM B62
13	Platen	1	DI	ASTM A536 65-45-12
12	Countersunk Head Bolt	n	Steel	
11	Bolt	1	Steel	
10	Flat Gasket	1	Steel	
09	Handwheel	1	Steel	ANSI 1045
08	O-Ring	2	EPDM	NBR
07	Retainer Flng	1	Cast Bronze	ASTM B62
06	Cap	1	DI	ASTM A536 65-45-12
05	Stem	1	Stainless Steel	SS420
04	Gasket	1	EPDM	NBR
03	Nut	1	Cast Bronze	ASTM B62
02	Disc	1	DI-EPDM	ASTM A536 65-45-12
01	Body	1	DI	ASTM A536 65-45-12