

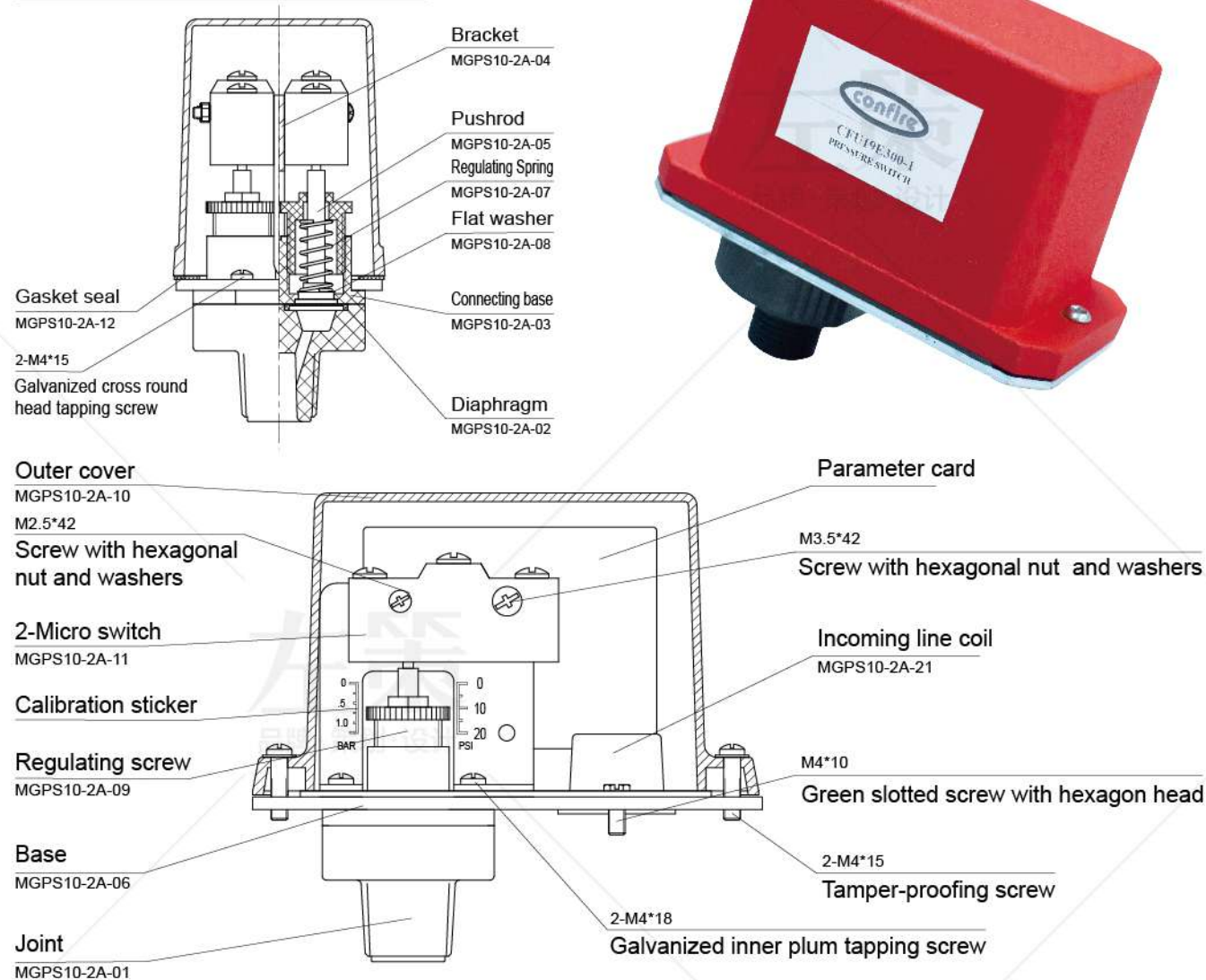
## Pressure Switch

Model: ZSJY 1.6BP

### Technical Features

- Dimension: 121mm(4 3/4")\*57mm(2 1/4")\*111mm(4 3/8")
- Wiring Inlet: 1/2"
- Pressure Connection: Nylon 1/2" NPT thread
- Outer Cover: die casting with red coating
- Base: Galvanized carbon steel
- Factory Setting: 5-7 PSI (cannot be adjusted after consignment)
- Differential Pressure: 1 PSI (cannot be adjusted after consignment)
- Maximum Working Pressure: 250 PSI
- Switch Contact: double SPDT
- Contact Capacity: 15 Amps under 125/250 VAC, 2.5 Amps under 30 VDC
- Dust Proof and Waterproof Level: IP66
- Temperature Range: -40°C to 60°C
- Tamper proof fasteners on outer cover

### Technical Specifications



## Pressure Gauge

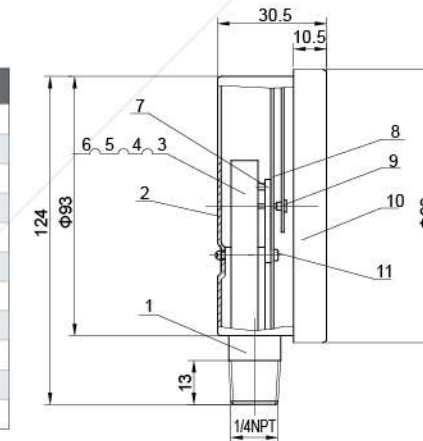
Model: PFE-00A/00B

### Technical Features

- Pressure Gauge for Fire Protection system
- Designed and manufactured in accordance with UL 393/FM2311
- Test Standard: UL 393/FM2311
- Temperature: 0 to 80°C
- Nominal Size: 1/4" NPT
- Nominal Pressure: 0-300PSI,0-600PSI

### Material List

NO.	Name	Material
1	Base	HPb59-1
2	Watchcase	1008
3	Spring pipe	Qsn0.8-2
4	Rivet	HPb59-1
5	Connecting rod	H62
6	Free end	H62
7	Inner core combination	HPb59-1
8	Dial plate	HPb59-1
9	Pointer component	Al
10	Watchcase	PC
11	Rivet column	HPb59-1

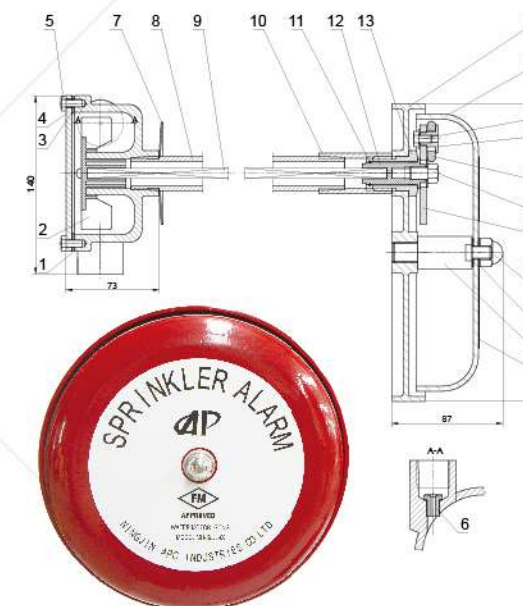


## Water Motor Gong

Model: MH-SLJL-00

### Technical Features

- Designed and manufactured in accordance with FM1055
- Test Standard: FM1055
- Temperature: 0 to 100°C
- Nominal Pressure: 0-300PSI



### Material List

NO.	Name	Material
1	Driver Shell	Aluminium Alloy
2	Impeller	Delrin
3	Sealing Gasket	Epdm
4	Cover	1045 or SS304
5	Bolt	1045 or SS304
6	Nozzle	C954
7	Gasket	1566
8	Support Pipe	1045 or SS304
9	Drive Shaft	Aluminium Alloy
10	Sleeve	1045 or SS304
11	Internal Circlips	SS304
12	Drive Shaft Adaptor	Delrin
13	Supporting Screw	Aluminium Alloy or SS304
14	Bell Seat	Aluminium Alloy
15	Gong	Aluminium Alloy
16	Bolt	Aluminium Alloy or 1045
17	Support Nut	Aluminium Alloy
18	Striker	Phenolic Resin
19	Bolt	Aluminium Alloy or SS304
20	Joint	Aluminium Alloy
21	Screw Nut	Aluminium Alloy or SS304
22	Gasket	Delrin
23	Supporting Post	Aluminium Alloy or SS304
24	Tag	Paper

